



INTSUM for D1

(Event D1.1 and D1.2)

DISCLAIMER:

This is for multiplayer online gaming using the Digital Combat Systems simulation software published by Eagle Dynamics. The information is not in any way suitable for real world use or operations.



RESPONSIBLE: VIS

- D1.1: Day, clear skies, winds from North
- D1.2: Day into night, clear skies, winds from North-East
- D2.1: Day, scattered/broken, winds from East
- D2.2: Night, clear skies, winds from South-East
- D3.1: Day, scattered, winds from South
- D3.2: Night, overcast, winds from South-West

Explanation:

- **Green:** Good conditions, VFR, easy to spot targets from all altitudes. No impact on tactics
- **Yellow:** Can be challenging to spot targets from high altitude due to clouds / low visibility. May have impact on tactics
- **Red:** Overcast and/or other conditions that make acquiring targets difficult. Will have impact on tactics

S

DISCLAIMER:

This is for multiplayer online gaming using the Digital Combat Systems simulation software published by Eagle Dynamics. The information is not in any way suitable for real world use or operations.

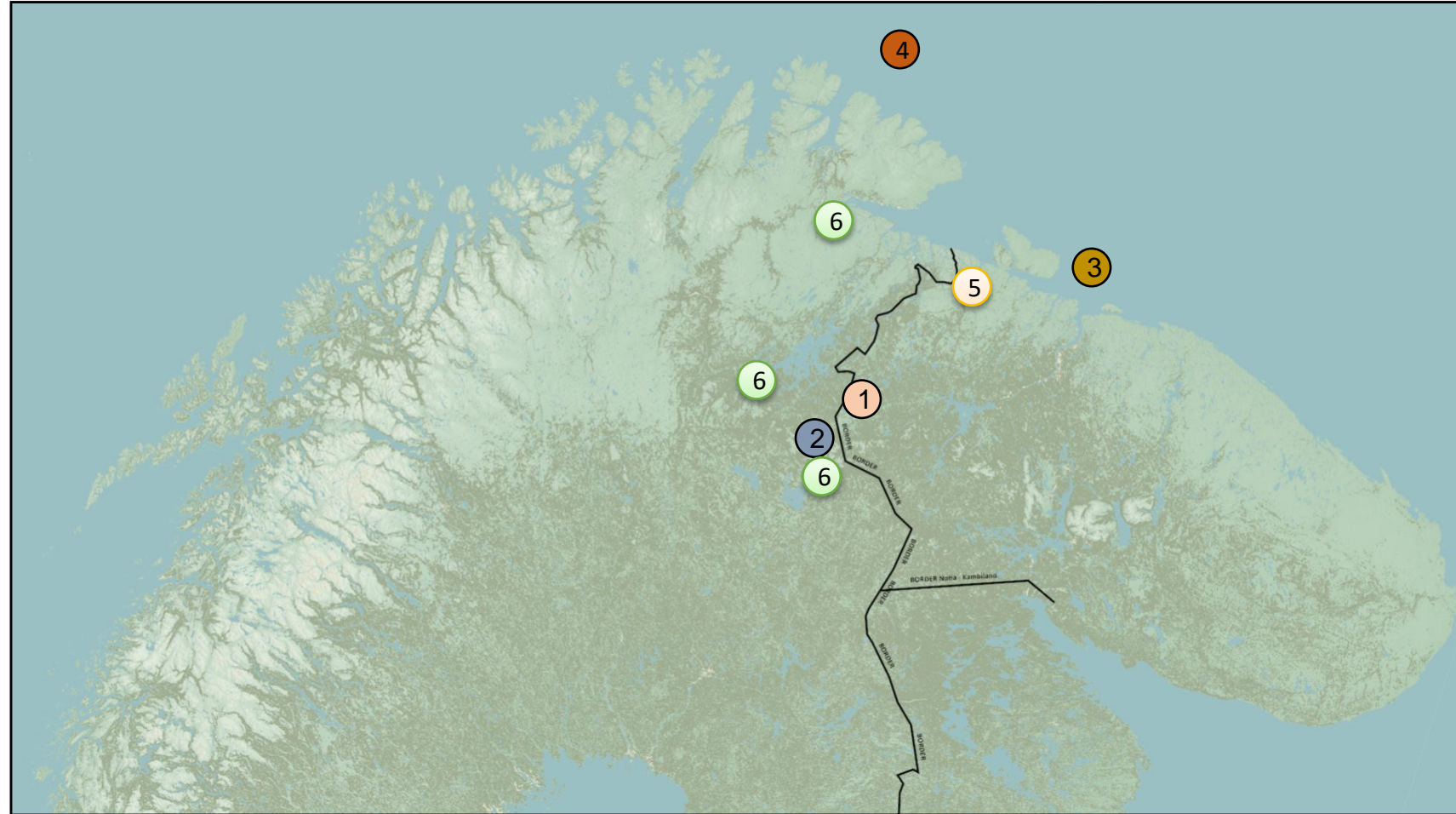




RESPONSIBLE: VIS

Significant events:

- ①- SRN 2nd Corps Army Mech.Division on the March, ready to invade on short notice
- ②- NINJA52 received Incoming from technical ID as Iron Resolve, camp identified IN FINLAND
- ③- Amphibious TG embarked, sail W
- ④- SRN Long range aviation Conducting multiple sorties
- ⑤- 1st Corps attached SCUD spotted on refueling, can be on Alert 1 (10h to fire)
Threatened: Kittila, Banak, 55th.Div, 56th.Div, PatriotA, PatriotB
- ⑥- Violation of NOR & FIN airspace by SRN aviation, ALMOST CERTAINLY Notian SpecOp/Recce instertions



DISCLAIMER:

This is for multiplayer online gaming using the Digital Combat Systems simulation software published by Eagle Dynamics. The information is not in any way suitable for real world use or operations.



ENEMY SITUATION (GROUND)



Observation:

- Close to NW part of the border:
 - Armour units in resupply
 - SCUD launchers
 - MI-24
- Close to W part of the border:
 - One Brigade Field HQ, yet no units observed (dashed yellow circle)
 - Armour / Mech units IVO one Brigade Field HQ, ready to march
- Close to SW part of the border:
 - Armour units in resupply
 - Mech units in resupply

Interpretation:

- 1st Corps IVO ZAPOLYARNYY, resupplying
- 922nd S2S Missile Reg attached to 1st Corps
- 2nd Corps status unclear
- 3rd Corps close to SW part of the border, resupplying
- At least 1 Brigade (Armour / Mech) close to Ivalo
- (At least one more Brigade could be missing in the yellow circle.)
- The Brigades close to W part of the border could belong to 2nd Corps.

DISCLAIMER:

This is for multiplayer online gaming using the Digital Combat Systems simulation software published by Eagle Dynamics. The information is not in any way suitable for real world use or operations.



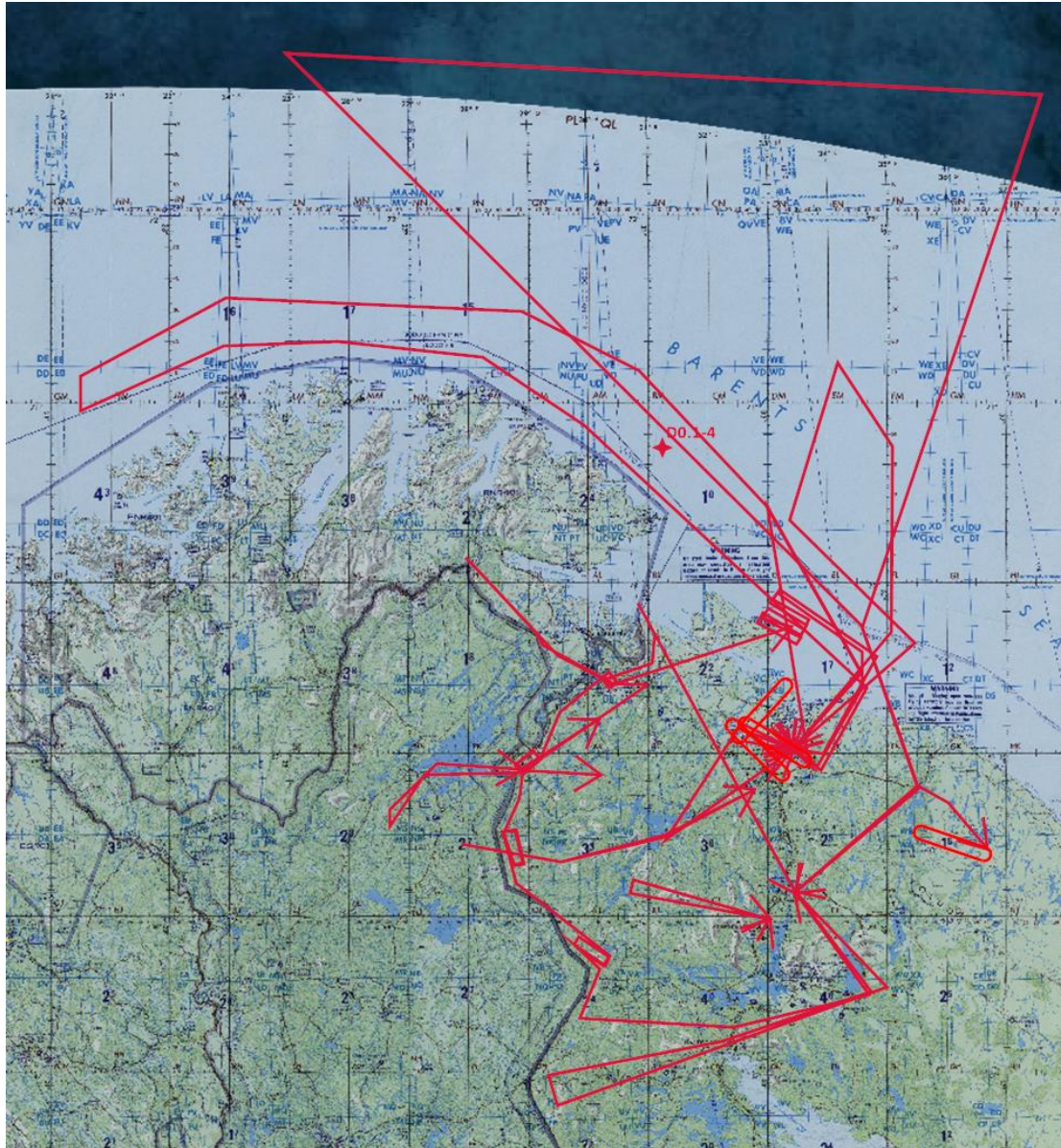


ENEMY SITUATION (AIR)

Several flights have been observed including possible CAP and recon flights and violations of blue territory.

Many flights have been reported to be VIDed but correlation with radar tracks difficult.

Identification of aircraft type remains an essential factor in assessing the type of mission of a red air flight.



DISCLAIMER:

This is for multiplayer online gaming using the Digital Combat Systems simulation software published by Eagle Dynamics. The information is not in any way suitable for real world use or operations.





ENEMY SITUATION (AIR)

LIKELY CAP tracks located mainly over red air bases only.

LIKELY AWACS track located far east.



DISCLAIMER:

This is for multiplayer online gaming using the Digital Combat Systems simulation software published by Eagle Dynamics. The information is not in any way suitable for real world use or operations.





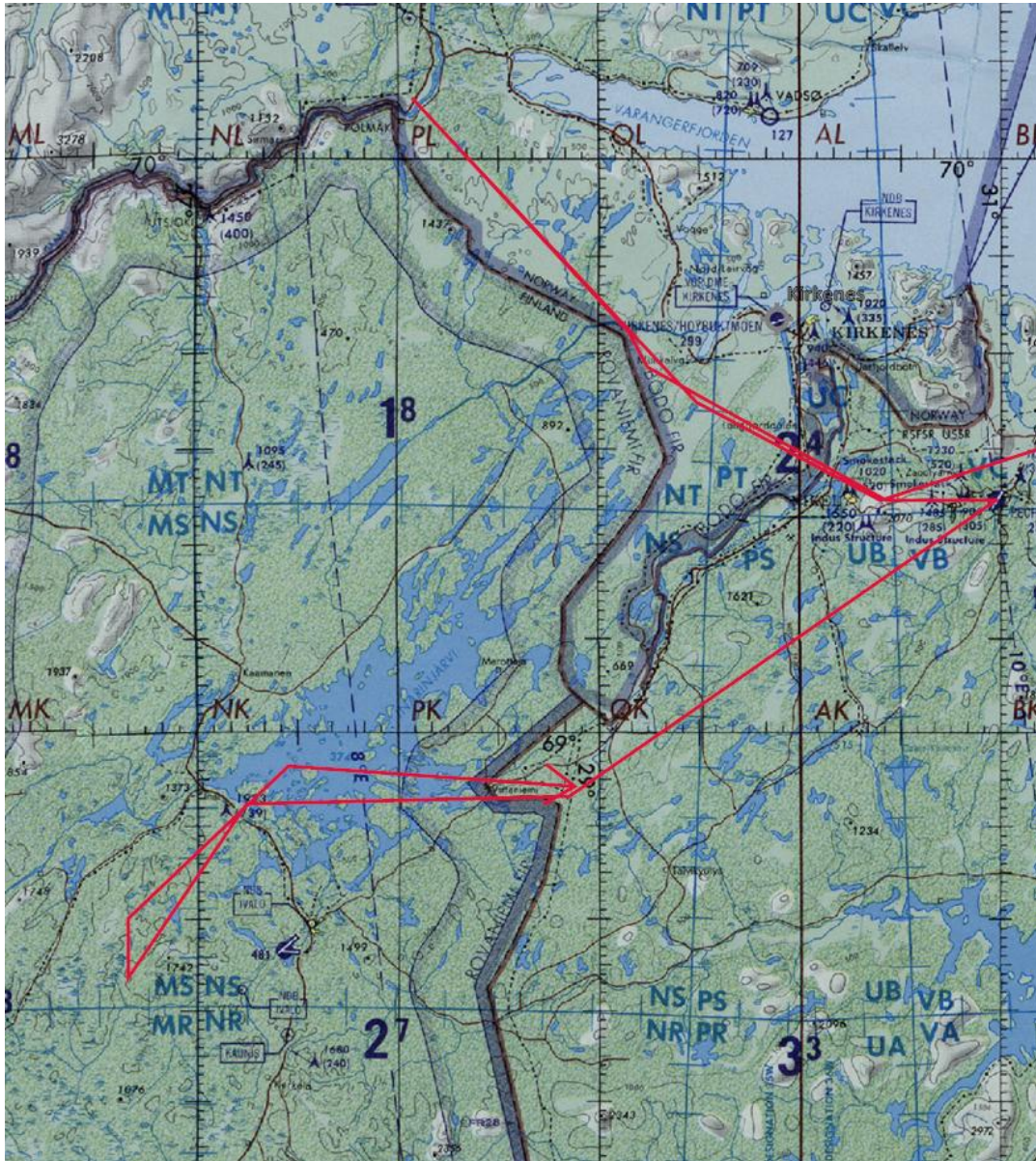
ENEMY SITUATION (AIR)



Two helicopter flights (VERY LIKELY 2x helo each) observed originating from near Pechenga.

One ALMOST CERTAIN landed in Norwegian territory near the Finnish border. The other one ALMOST CERTAIN landed deep within Finnish territory. Both took off again a few minutes later and flew back into Red territory. Assessment is LIKELY SpecOps deployment.

This is an indicator of a preparation for an assault according red doctrine.



DISCLAIMER:

This is for multiplayer online gaming using the Digital Combat Systems simulation software published by Eagle Dynamics. The information is not in any way suitable for real world use or operations.





ENEMY SITUATION (AIR)



Long range TU-142 mission took place following the Norwegian coastline. **LIKELY** recon mission.

Another **LIKELY** recon mission was conducted along the Finnish/Norwegian and Red border.



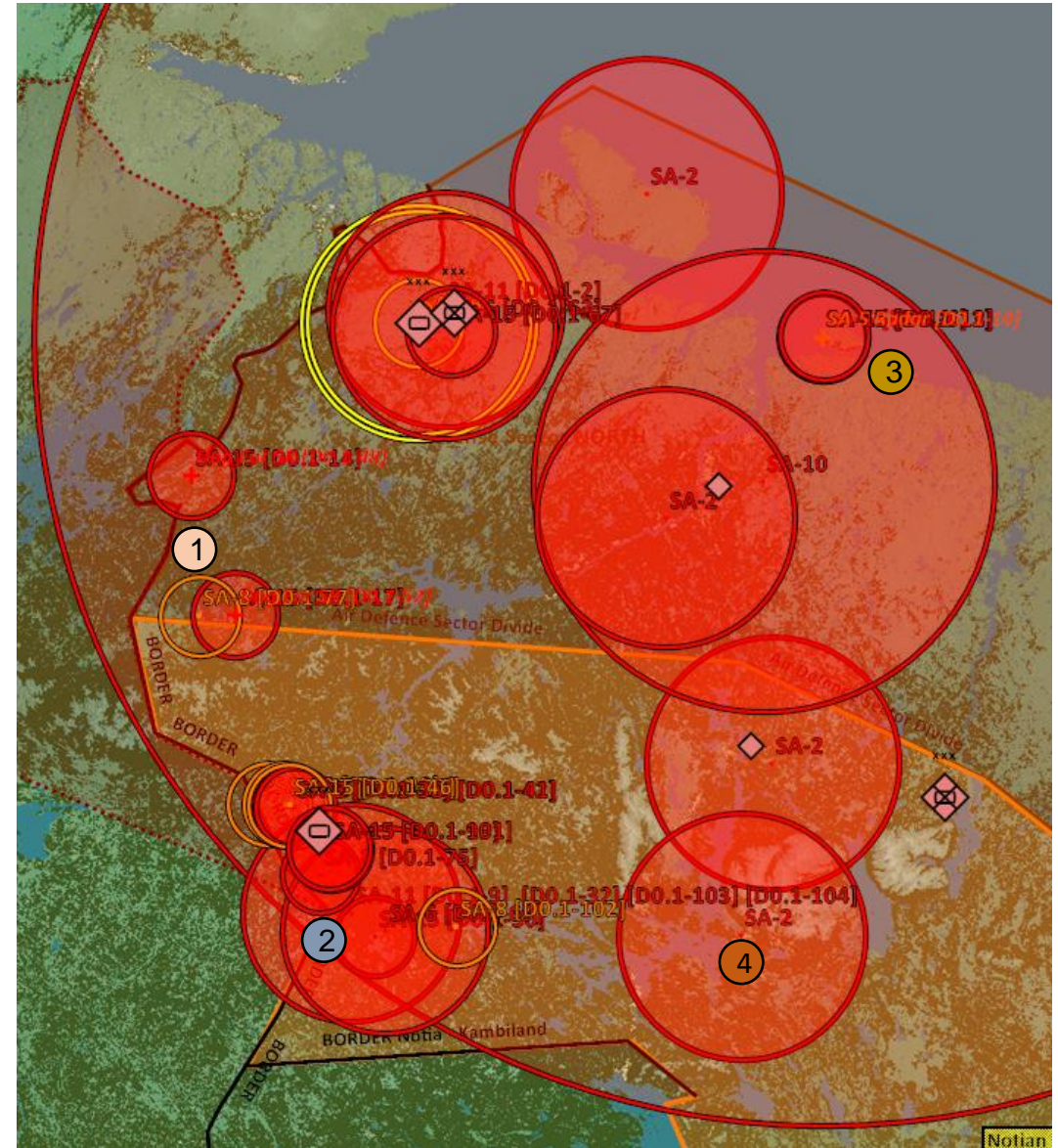
DISCLAIMER:

This is for multiplayer online gaming using the Digital Combat Systems simulation software published by Eagle Dynamics. The information is not in any way suitable for real world use or operations.



ENEMY SITUATION (IADS)

- ① SA-8 and SA-15 near FIN-SRN Border indicate presence of Brigade HQs
- ② Large amount of 3rd Corps SHORAD spread out ~30nm
- ③ Reconnaissance over Kildin island has discovered presence of at least 3x SA-15. May indicate more than 1x Air Defense Battery Present.
 - 8001 SA-5 BN located at SRNTGT040, Kildin Air Defence Postition W 1
 - SRNTGT040 and SRNTGT111 remain HVTs
- ④ VID intel indicates SA-15 and Sborka SR production at SRNTGT071/073 to finish on D2. Striking SRNTGT071/073 not in line with Phase 2 objectives.

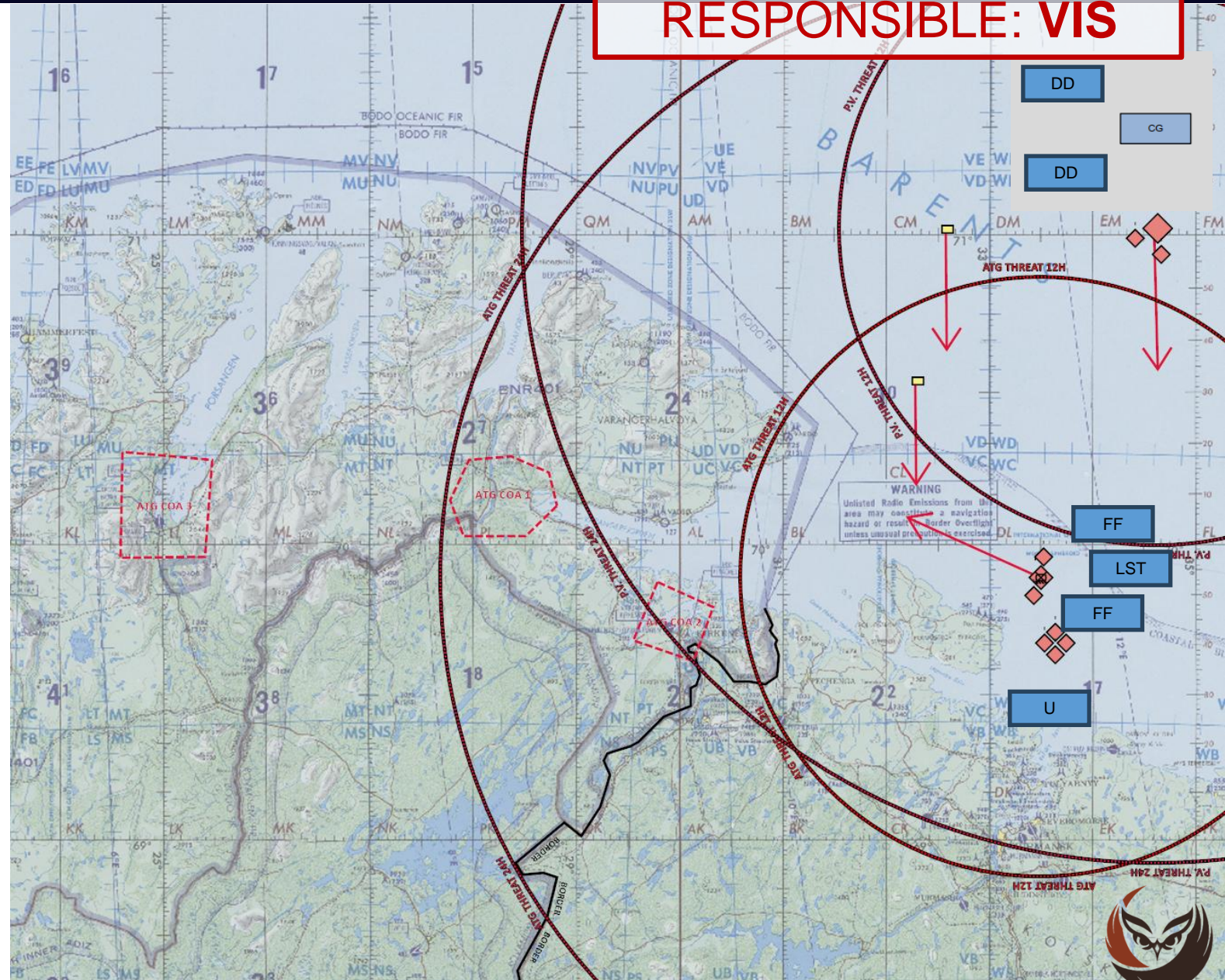
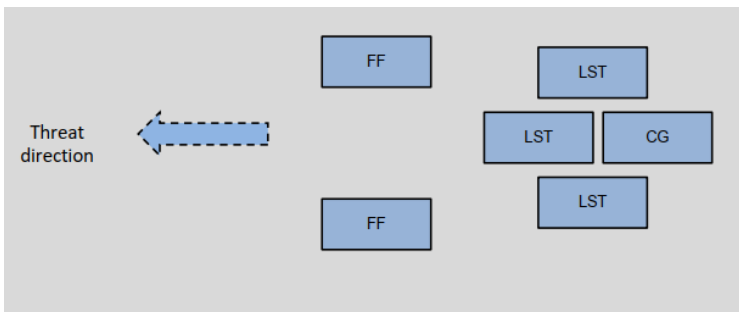


DISCLAIMER:

This is for multiplayer online gaming using the Digital Combat Systems simulation software published by Eagle Dynamics. The information is not in any way suitable for real world use or operations.



- DOCTRINAL APMHIBIOUS TASK GROUP





RESPONSIBLE: VIS

- FINLAND - NINJA52 reported receiving ground fire from this location. Reported Tent with 3x Technicals on a tree line. Believed to be a terrorist camp belonging to Iron Resolve (declared ENEMY)

Explanation:

- Updated BDA for enemy forces
 - IADS
 - Ground units
 - Air
 - Ships
- Can be done in one slide, or separated into multiple slides

DISCLAIMER:

This is for multiplayer online gaming using the Digital Combat Systems simulation software published by Eagle Dynamics. The information is not in any way suitable for real world use or operations.





RESPONSIBLE: VIS

MLCOA : Continuing violation of borders by SRN, troops stay in HIGH Alert and will remain close to Finnish and Norwegian border. VERY LIKELY Recon / SpecOp troops have been already, and will continue to be inserted into Norway and Finland by air.

Notia will seek a Casus Belli to attack Finland. Utilization of terror groups is ALMOST CERTAIN.

Explanation:

- Based on all information available (all previous actions, reported in campaign manager), all VID intelligence INTSUMs and all previous VIS analysis and understanding
- An assessment on what VIS think the enemy is doing now and in the future
- Information can be presented either in text only, or text supported by map or image. (Text to the left, map/image to the right)
- Can be split up in short term (next few events) and long term

DISCLAIMER:

This is for multiplayer online gaming using the Digital Combat Systems simulation software published by Eagle Dynamics. The information is not in any way suitable for real world use or operations.





RESPONSIBLE: VIS

MDCOA : A combined air, sea, and ground assault on Finland, Amphibious Forces landing (in 24-48h) in Norway (OBJ. B). Ground assault of Ivalo (OBJ. A), assisted by air forces and P.V.SAG, CAN already start in 21st September (D1)

According to doctrine the attack will commence with air forces conducting wave attacks ahead of assault forces and strikes on objectives and HVT. Conventional SCUD attack against HVT hours prior to assault is **LIKELY**.

Indicators apart from incoming fire:

- Friendly troops coming under artillery fire (SCUD, MLRS)
- Enemy aircraft crossing the border
- Loss of contact with troops in the back area (SpecOp attacks)

Explanation:

- Based on all information available (all previous actions, reported in campaign manager), all VID intelligence INTSUMs and all previous VIS analysis and understanding
- A assessment on what VIS think is the most dangerous the enemy can do now and in the future
- Information can be presented either in text only, or text supported by map or image. (Text to the left, map/image to the right)
- Can be split up in short term (next few events) and long term

DISCLAIMER:

This is for multiplayer online gaming using the Digital Combat Systems simulation software published by Eagle Dynamics. The information is not in any way suitable for real world use or operations.



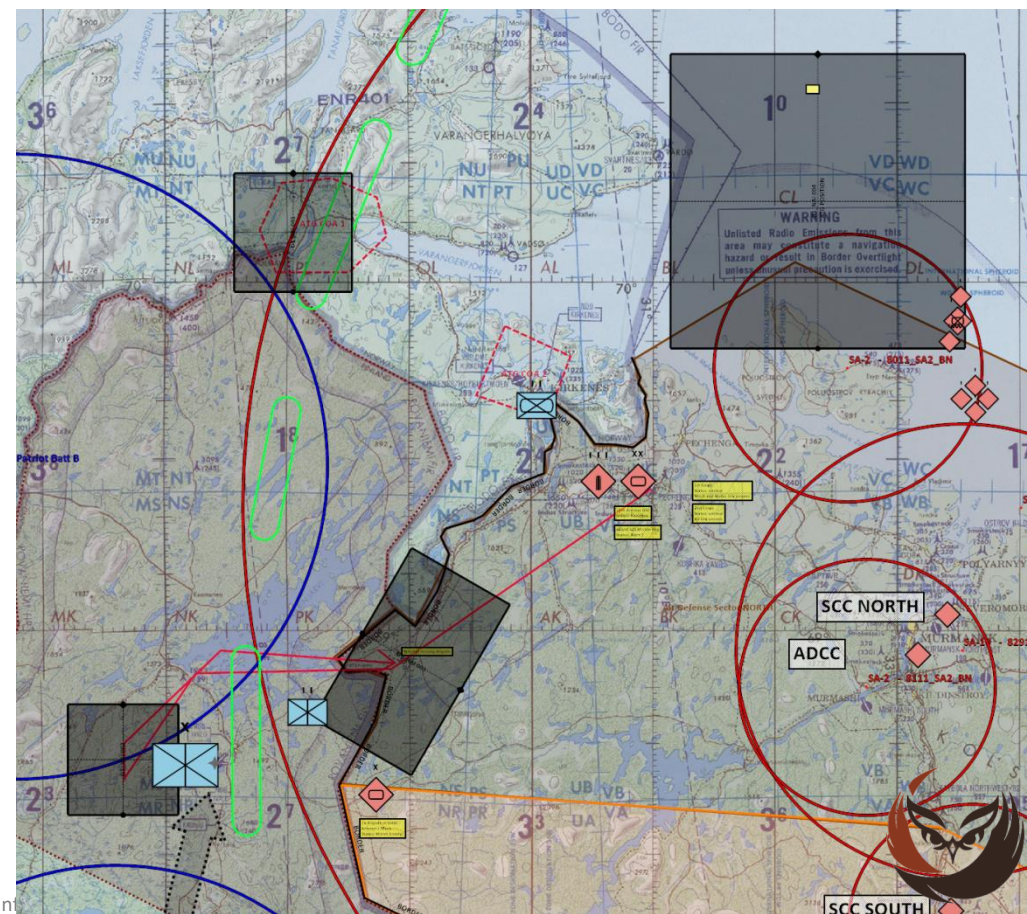


RESPONSIBLE: VIS

- At MDCOA recommendation of changing ROE to WEAPON TIGHT (codeword?)
- DCA flights to protect HVA / blue territory.
- Recommend declaring NO FLY ZONE over claimed territory in Finland
- (SC)AR flights on standby should a ground attack begin

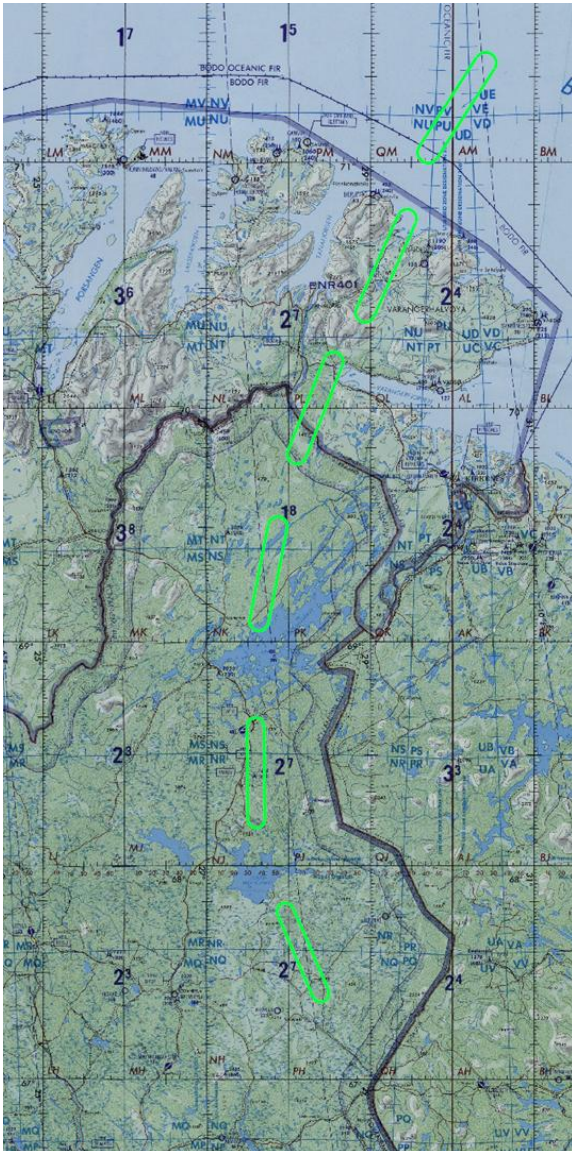
HVT

- IADS: SHORAD ivo FIN-SRN Border; SRNTGT40, 111
- Maritime: Pjotr Velikij SAG
- AIR: AWACS
- GND: SCUD / Field HQs / SAM Units / Field Logistics identified
- NAI 001 – Recon troops inserted IVO Skippagurra („crossroads”)
- NAI 002 – Recon troops inserted WEST of Ivalo
- NAI 003 – Recon SRN Army elements around UNK Brig. Field HQ to ID
- NAI 004 – Recon Amphibious Task Group composition / course





RECOMMENDATIONS FOR TARGETING



Recommend DCA flights along Norwegian/Finnish border to deter Red activity into Blue territory (MLCOA).

Request identification of any (Red) aircraft trying to enter Blue territory.

Recommend (SC)AR flights on standby to be able to respond quickly should a Red ground attack occur.

According Red doctrine a ground assault will be accompanied by AR flights – strong (early?) indicator of an attack.

DISCLAIMER:

This is for multiplayer online gaming using the Digital Combat Systems simulation software published by Eagle Dynamics. The information is not in any way suitable for real world use or operations.





NEW INTELLIGENCE REQUIREMENTS



Intelligence Requirement / Information gap	Nominated by	Latest time of value	Justification
Can the SA-5 stationed IVO N 69 21.5 E 034 01 engage friendly assets operating above or west of the Notian-Finnish border?	VIS IADS	D0	FRIENDLY FORCES OPERATING LIMITS
What is the location of SRN ARMY independent units? Are they mobilized?	VIS	D0	SCUD REGIMENTS ARE HVT, INDEPENDENT UNITS
What is the location of 2nd Corps Field HQ?	VIS	D0	LAND ATTACK AGAINST FINLAND WILL BE MOST LIKELY STARTED BY 2nd CORPS
What is DRK AF operational status? - Is the DRK Air Force conducting CAP missions?	VIS	D0	Kambilands role during offensive operations
What are the initial Locations of the Air Defense Divisions attached to 1st, 2nd and 3rd Corps?	VIS IADS	D0	
What are the Locations of ADF Sector North mobile SAMs (SA-6, SA-11)?	VIS IADS	D0	
What are the Locations of ADF Sector South mobile SAMs (SA-6, SA-11)?	VIS IADS	D0	
IADS EWR Locations - Are there Notian EWRs positioned west of E 32°, and if yes, where are they located?	VIS IADS	D0	
What are the Locations of ADF Sector North unaccounted Static SAMs (SA-3)?	VIS IADS	D0	
What are the Locations of ADF Sector South unaccounted Static SAMs (SA-3)?	VIS IADS	D0	
AWACS IADS CONNECTION NODES - How many nodes are in the AOR? What is their location?	VIS	D0	
ARMY CORPS LOG. BN locations? (1st & 2nd Corps)	VIS GROUND	D0	
Type and number of aircraft located at Alakurti (DRK)	VIS AIR	D0	Kambilands role during offensive operations
What is the SRN Air Force fielded A2A + A2G armament?	VIS AIR	D0	
Capabilities of Air Assets to provide SEAD / ESCORT support	VIS AIR	D0	
		See VIS TTP , section 4.4.1 Intelligence collection (page 45-48)	

DISCLAIMER:

This is for multiplayer online gaming using the Digital Combat Systems simulation software published by Eagle Dynamics. The information is not in any way suitable for real world use or operations.